

**ROTARY PRINT Vol. 1**

*Make in India*

Product : **SHUBHAM S/L**  
Particulars : Meet abrasion and colour fastness standards  
Sizes : Standard width 5', 6' 10' & 11'  
Shades : Red, Green, Blue, Black, Brown, Gold  
Usage : Exhibitions, Fairs, Multiplexes, Conference Hall,  
Institutional Market, Tent House, Thermal Insulation  
GSM : 725(±5%)  
Thickness : 3.0 MM  
Roll Length : Approx. 36 to 45 meters

Product : **SHUBHAM M/L**  
Particulars : Meet abrasion and colour fastness standards  
Sizes : Standard width 5', 6' 10' & 11'  
Shades : Red, Green, Blue, Black, Brown, Gold  
Usage : Exhibitions, Fairs, Multiplexes, Conference Hall,  
Institutional Market, Tent House, Thermal Insulation  
GSM : 725(±5%)  
Thickness : 3.5 MM  
Roll Length : Approx. 36 to 45 meters

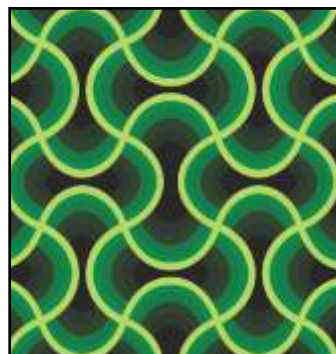
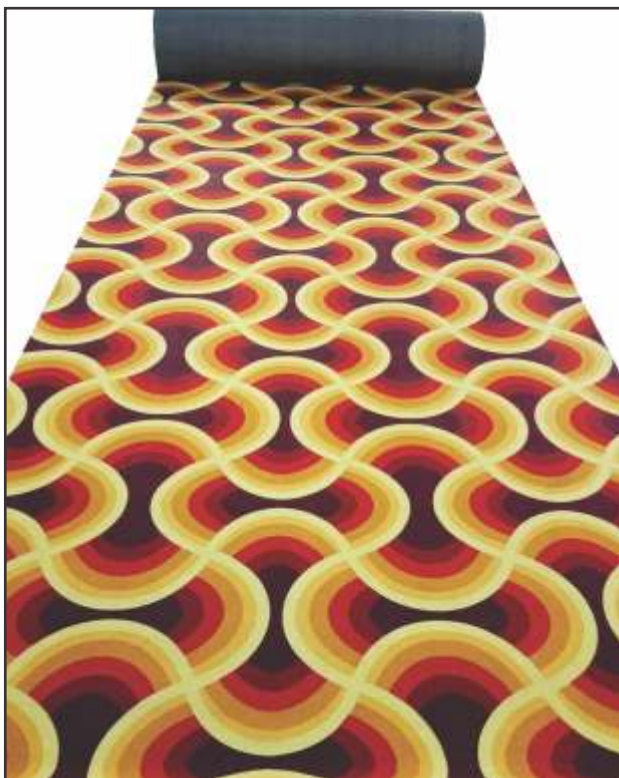
Product : **SHUBHAM D/L**  
Particulars : Meet abrasion and colour fastness standards  
Sizes : Standard width 5', 6' 10' & 11'  
Shades : Red, Green, Blue, Black, Brown, Gold  
Usage : Exhibitions, Fairs, Multiplexes, Conference Hall,  
Institutional Market, Tent House, Thermal Insulation  
GSM : 775(±5%)  
Thickness : 4.0 MM  
Roll Length : Approx. 36 to 45 meters

Note : Slight Color variation may occur in catalogue. Please refer to the actual product.

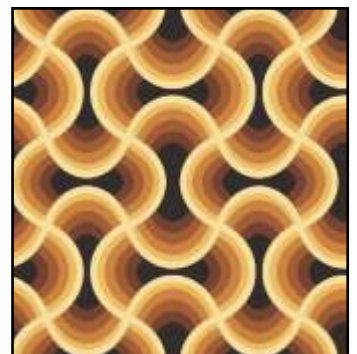




DT-1272/MAROON



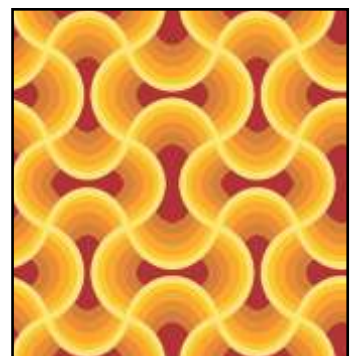
DT-1272/GREEN



DT-1272/BROWN



DT-1272/MAROON

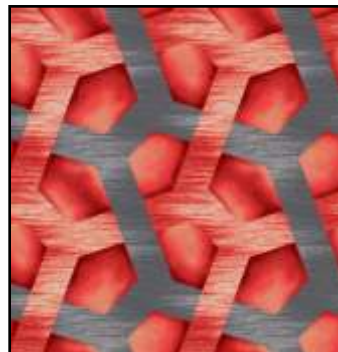


DT-1272/RED

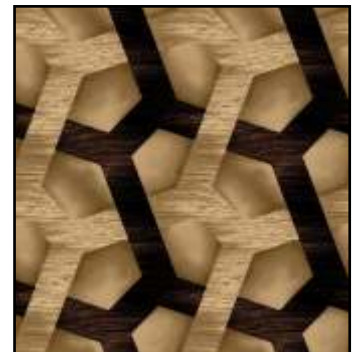




DT-402/RED



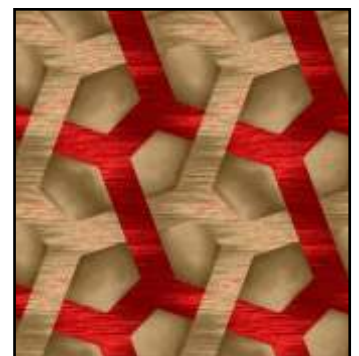
DT-402/GREY



DT-402/BLACK



DT-402/YELLOW



DT-402/RED





DT-1261/RED



DT-1261/RED





DT-23/RED



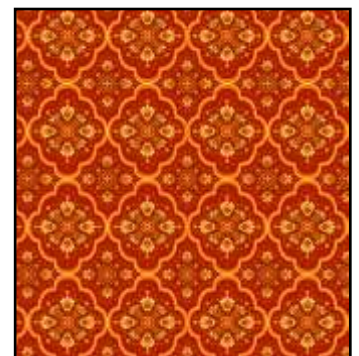
DT-23/MAROON



DT-23/BLUE



DT-23/GREEN



DT-23/RED





DT-790/RED



DT-790/MAROON



DT-790/BLUE



DT-790/GREEN



DT-790/RED





DT-536/RED



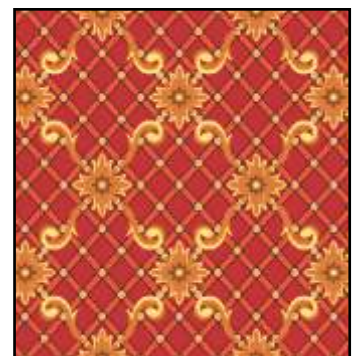
DT-536/GREEN



DT-536/BLUE



DT-536/MAROON



DT-536/RED





DT-580/RED



DT-580/GREEN



DT-580/BLUE



DT-580/MAROON



DT-580/RED





DT-138/RED



DT-138/GREEN



DT-138/BLUE



DT-138/MAROON



DT-138/RED





DT-467/RED



DT-467/GREEN



DT-467/BLUE



DT-467/MAROON



DT-467/RED





DT-89/RED



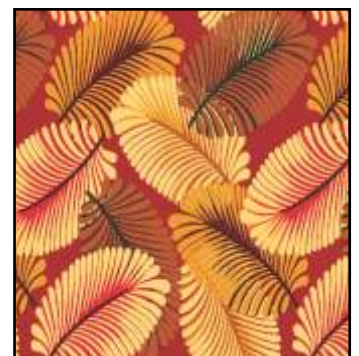
DT-89/GREEN



DT-89/BLUE



DT-89/MAROON



DT-89/RED





DT-616/RED



DT-616/GREEN



DT-616/BLUE



DT-616/MAROON



DT-616/BLACK





DT-317/RED



DT-317/GREEN



DT-317/BLUE



DT-317/MAROON

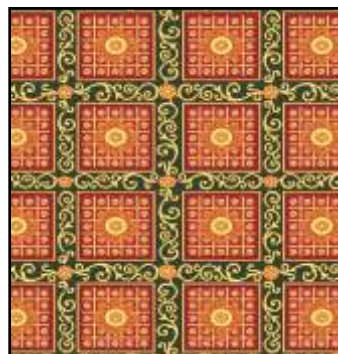


DT-317/RED

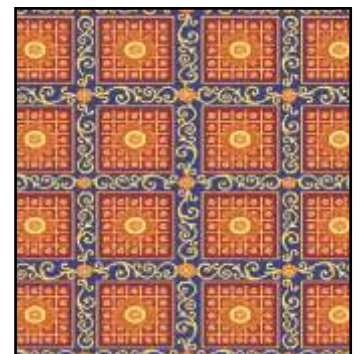




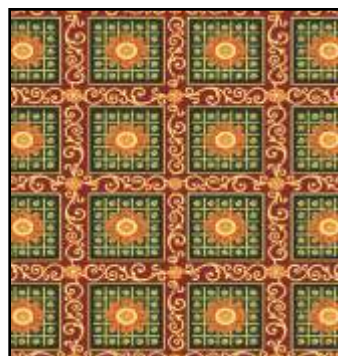
DT-530/RED



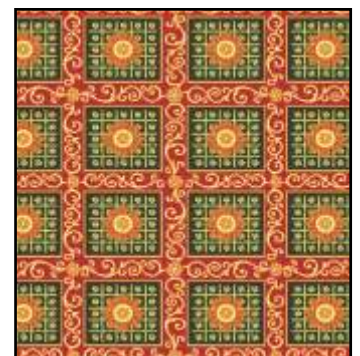
DT-530/GREEN



DT-530/BLUE



DT-530/MAROON



DT-530/RED





DT-600/RED



DT-600/GREEN



DT-600/BLUE



DT-600/MAROON



DT-600/RED





DT-432/RED



DT-432/GREEN



DT-432/BLUE



DT-432/MAROON



DT-432/RED





DT-75/RED



DT-75/GREEN



DT-75/BLUE



DT-75/MAROON



DT-75/RED





DT-278/RED



DT-278/GREEN



DT-278/BLUE



DT-278/MAROON



DT-278/RED





DT-112R/RED



DT-112R/MAROON



DT-112R/RED





DT-786/RED



DT-786/GREEN



DT-786/BLUE





DT-446/RED



DT-446/GREEN



DT-446/BLUE



DT-446/MAROON



DT-446/RED





DT-91/RED



DT-91/GREEN



DT-91/BLUE



DT-91/MAROON



DT-91/RED





DT-622/RED



DT-622/GREEN



DT-622/BLUE



DT-622/RED





DT-370/RED



DT-370/GREEN



DT-370/BLUE



DT-370/MAROON



DT-370/RED





DT-922/RED



DT-922/GREEN



DT-922/BLUE



DT-922/MAROON



DT-922/RED

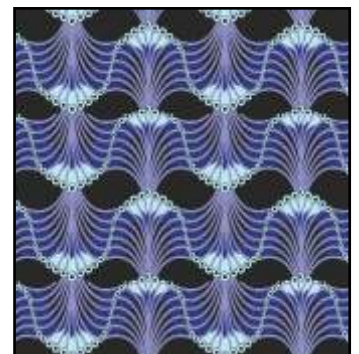




DT-874/BLACK



DT-874/GREEN



DT-874/BLUE



DT-874/MAROON



DT-874/BLACK





DT-007/RED



DT-007/GREEN



DT-007/BLUE



DT-007/MAROON



DT-007/RED





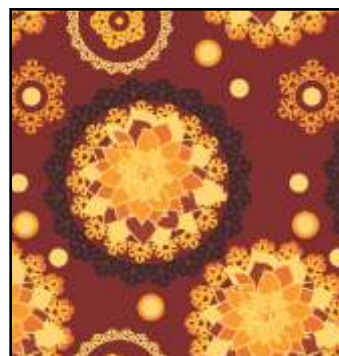
DT-455/BROWN



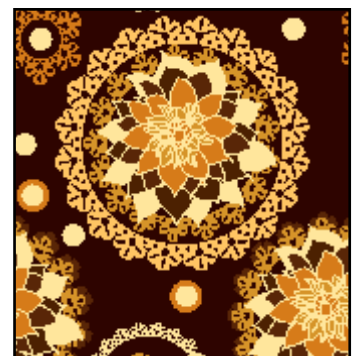
DT-455/GREEN



DT-455/BLUE



DT-455/MAROON



DT-455/BROWN





DT-787/RED



DT-787/BLACK



DT-787/BLACK+GOLD



DT-787/DK BLUE



DT-787/MAROON+FAWN





DT-888/RED



DT-888/GREEN



DT-888/BLUE



DT-888/MAROON



DT-888/RED





DT-1051/RED



DT-1051/GREEN



DT-1051/BLUE



DT-1051/MAROON



DT-1051/RED





DT-1052/RED



DT-1052/GREEN



DT-1052/BLUE



DT-1052/MAROON



DT-1052/RED



## **DHARMESH TEXTILES LIMITED**

Over three decades of experience has gained immense reputation to **Dharmesh Textiles Limited** in carpets and textiles industry. Incorporated in the year 1985, our company is recognized as the leading manufacturer and supplier of different types of carpets. We offer our products under the brand name “**Sundaram**”. We are the registered member of “Federation of Indian Chambers of Commerce and Industry” (FICCI).

Located in the industrial area of Bhiwani, Haryana (India). Our products are available in various types depending on the customers’ diversified requirements.

The company’s nationwide networks help us to provide the time bound service. Looking forward, our goal is to introduce new quality products related to carpets/floorings time to time with customers’ satisfaction.

### *Wide range of manufactured products include*

- **NON WOVEN CARPETS/NON-WOVEN PRINTED CARPETS**  
Kaleen • Felt • Ribbed • Velour Plain/Velour Designer • Embossed Runner
- **TYPE OF PRINTING**  
Digital • Cromojet • Rotary print • Paper print • Heat embosed
- **WALL TO WALL TUFTED CARPETS**  
Polypropylene (PP) • Nylon • Polyester • Printed
- **CUT PILES CARPETS**
- **CARPET TILES**  
Polypropylene (PP) • Nylon • Printed  
Backing available - Bitument & Cushion
- **CUSHION MATS**
- **ARTIFICIAL GRASS CARPET**
- **RECYCLE POLYESTER STAPPLER FIBER**  
Door Mats • Area Rugs • Runners









## **Dharmesh Textiles Limited**

Plot No. 21-22, Sector 26, Industrial Area, Bhiwani, Haryana-127 021, INDIA  
105, Prakash Chambers, 6, Netaji Subhash Marg, Daryaganj, New Delhi - 110002  
E-mail : [sales@dharmeshtextiles.com](mailto:sales@dharmeshtextiles.com) | Website : [www.dharmeshtextiles.com](http://www.dharmeshtextiles.com)  
Ph. : 093543 01848, 093548 01850, 098701 01273